



# SEALING SOLUTION SUPPLIER

## **WILLMORE** **RUBBER PRODUCTS** - A SPECIALIZED MANUFACTURER -

A Solutions Provider company specialized in the Design, Manufacturing and Trading of Building and Construction Materials across the region.

With over 20 years' combined experience in the rubber sealing industry, we have gained an excellent understanding.

Our commitment to quality is clearly revealed in the way we do our business; It is our honor to be your partner.

---

Building material

Construction seals

Waterstop expert

Industrial supply

Customized service

## Company Profile

Covering an area of 98000sqm , with 20 senior technical staffs. We are professional manufacturer of rubber products which are used in road and construction, tunnel, water conservancy, electric power,railway, etc, more than 20 professional senior technical personnel.

Our rubber products include:

- Rubber waterstops,
- Rubber seal strip,
- Rubber sheet,
- FRP sealings,
- Tunnel sealings,
- PVC swelling strip,
- Bulb strips for pipe, window, door, autos
- and other construction products.



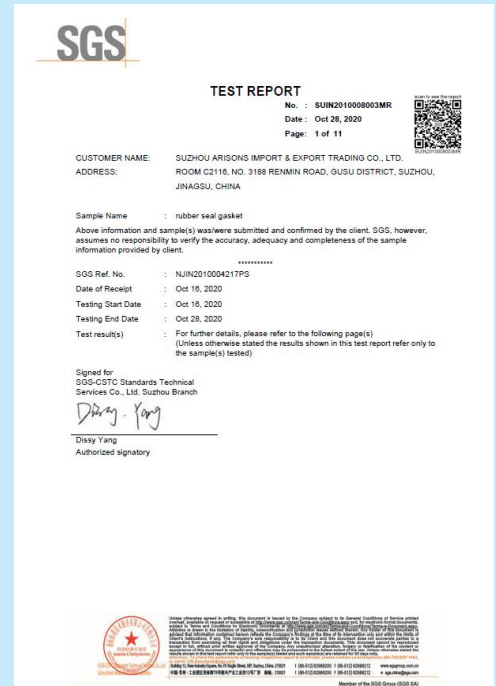
**More than 20 years of experience in the manufacture of rubber products**



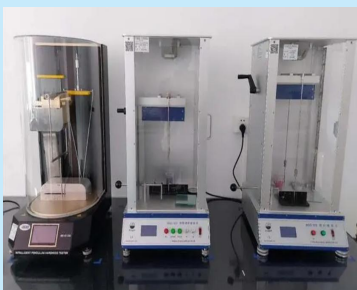
## Professional and reliable manufacturer of customized rubber products



## SGS Certified



## Guarantee the quality of each goods



**WILLMORE**  
NEW MATERIAL  
- A SPECIALIZED MANUFACTURER -



# Side Bulb Seal Strip



Skeleton sealing strip: sponge glue + dense glue + steel belt		
Sponge glue	Soft sponge	Density: 0.5 ~ 0.6 g/mm <sup>3</sup>
	Ordinary sponge	Density: 0.6 ~ 0.7 g/mm <sup>3</sup>
	Hard sponge	Density: 0.7 ~ 0.8 g/mm <sup>3</sup>
Dense glue	Hardness: 72° ~ 75° Shore A	
	Tensile Strength: ≥ 10 Mpa	
	Elongation at Break: ≥ 375	
Steel belt	Common models: 20#、26#、30#、33#、35#	



## Specification:

Made of high-quality EPDM rubber, high temperature resistance, ozone resistance, high tensile strength.

## Appliation:

Suitable for mechanical equipment, electrical cabinets, glass walls, automobiles, steel plates, etc., to play the role of reinforcement, anti-collision, anti-slip and anti-scratch.



**WILLMORE**  
NEW MATERIAL  
- A SPECIALIZED MANUFACTURER -

# U Shaped Car Decorative Door Trim



Car Door Seal Weatherstrip U Shaped Car Decorative Door Trim	
Model Number	AR-U-1003
Color	Red,Blue,Black,White and Gray or as customer's requirement
Material	PVC+Steel
Features	1.100% brand new and high quality.
	2.Car Door Edge Sealing Strip Trim Decor Protector.
	3.Waterproof , wear resistance, anti-corrosion.
	4.Well flexibility and elasticity, increased sealing and sound insulation effect.
Application	Car door,Window,Aluminum Window

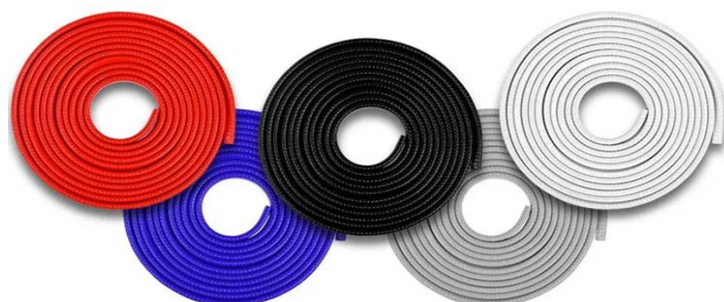


**Advantages:** Waterproof, isolator noise, corrosion resistance, high temperature resistance, wear resistance, anti-aging, UV resistance.

**Easy to install:** Direct replacement. Just push on the rubber seal above the install place.

## CAR DOOR EDGE GUARD. FITS FOR MOST OF CARS.

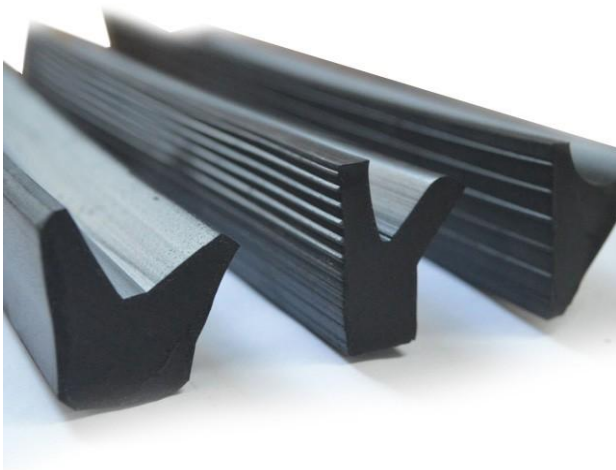
Car door edge guard will protect your vehicle from nicks, chips, scratches. thicknessU channel design, fit easily over any door edge.



**WILLMORE**  
NEW MATERIAL  
- A SPECIALIZED MANUFACTURER -



# Extrusion Sealing Strip



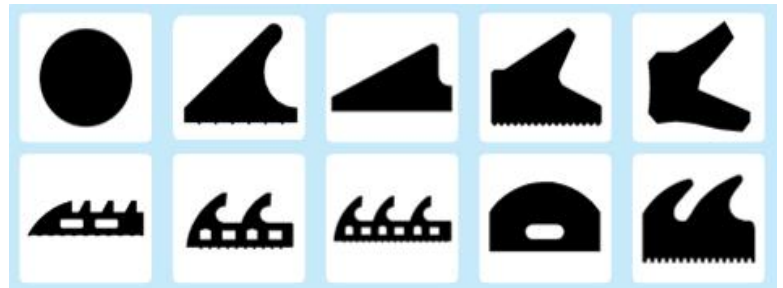
Cement rubber seal is used in the construction field, engineering industry, with rubber as raw materials, hardness between 50-70 degrees, sealing effect is strong, wide applicability, no pollution to water.

## Features:

- Good elasticity, high strength and good elongation
- Wedge cross-section, large compression ratio, easy and fast installatio
- Resistant to aging and long service life
- The eagle beak shape is outward, which is conducive to sealing and has a self-sealing function

## Application:

- Reinforced concrete drainage pipes
- Concrete top pipe, FRP top pipe, rectangular top pipe
- Automotive, mechanical, chemical pipeline interface Pipes for rivers, roads, subways and tunnels



## Technical Parameters of Extruded EPDM Rubber Sealing Strip

1	Hardness	50° ±5° Shore A
2	Tensile Strength	≥ 9 MPa
3	Elongation at Break	≥ 375 %
4	Compression Set 23°C *72h	≤ 12 %
5	Hot Air Aging Tensile Strength Change 70°C *72h	
	Hardness Enhancement	-5° ~8° Shore A
	Tensile Enhancement	-20 % ~ 0
	Elongation at Break Enhancement	-30 % ~ 10%
6	Stress Relaxation , 23°C *7 Days	≤ 14 %
7	Volume change in water , 70°C *7 Days	-1 % ~ 8%
8	Ozone resistant 50pphm, 40°C *72 h	No cracks



# Foam Sealing Strip

Made of foamed EPDM rubber, excellent anti-aging performance, service life can exceed 10 years; High elasticity, can quickly return to the original after long-term pressure, still maintain effective sealing effect. 。



## Specification:

- Cross-section: Dimensions (width, height or diameter) and shape within 50mm can be customized, tolerance:  $\pm 1\text{mm}$
- Hardness: 10° ~30° Shore A
- Density: 0.35~0.8 g/mm<sup>3</sup>

## Feature:

- The foaming density is uniform, and the outer surface is smooth and non-sticky
- Non-toxic, odorless, environmentally friendly insulation
- High temperature resistance, anti-aging, acid and alkali resistance
- Strong resilience and compression resistance

## Application:

- Car door sealing
- Electrical cabinet sealing
- Door&window sealing
- Sealing of hatches and container lids



**WILLMORE**  
NEW MATERIAL  
- A SPECIALIZED MANUFACTURER -



# Swelling Rubber Strip

Bentonite is a swellable clay waterproofing compound that is glued or nailed in strips into construction joints. Known as a hydrophilic waterstop system, bentonite expands up to 3 times its dry volume when it comes into contact with water, forming a compression seal in concrete joints. Bentonite's ability to swell enables it to fill small cracks and voids in concrete, preventing the ingress of water around joints. And since clay is a natural material, bentonite is a popular waterstop choice for potable water applications.

## Applications:

- Pipe penetration.
- Water reservoirs.
- Settling pond.
- Deformation and concrete construction joints.
- Water conservancy and hydro-power projects.



## Technical Parameters of swelling strip

1	Color	Black, Red
2	Hardness	45±5 shore A
3	Tensile strength	≥450%
4	Expansion	≥ 300%
5	Specific gravity	1.35-1.40
6	Hydro-static resistance	> 550KPa (55m head)
7	temperature range	-24°C - 52°C



Before water



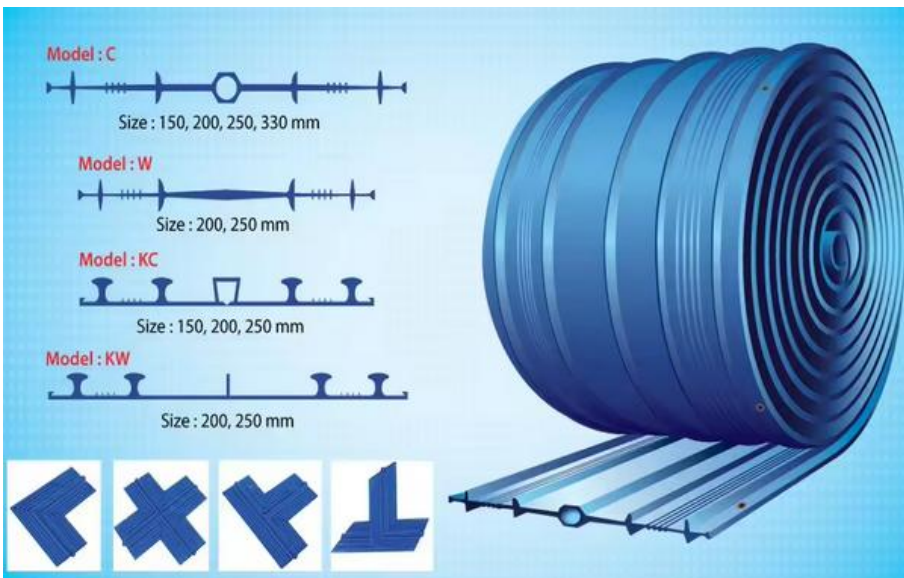
In water



After water

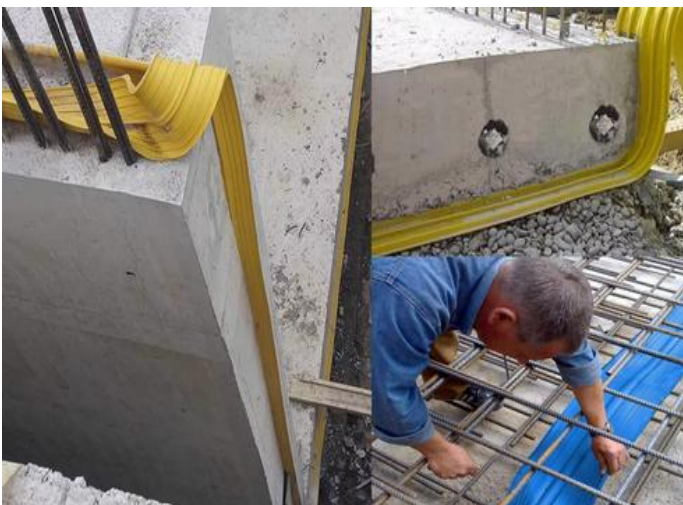
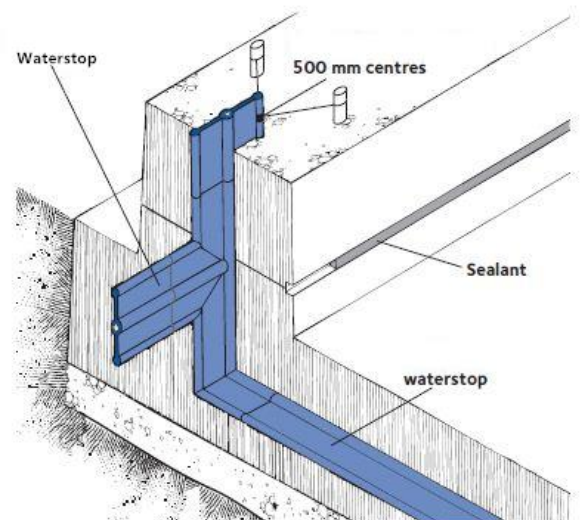
**WILLMORE**  
NEW MATERIAL  
- A SPECIALIZED MANUFACTURER -

# PVC Waterstop



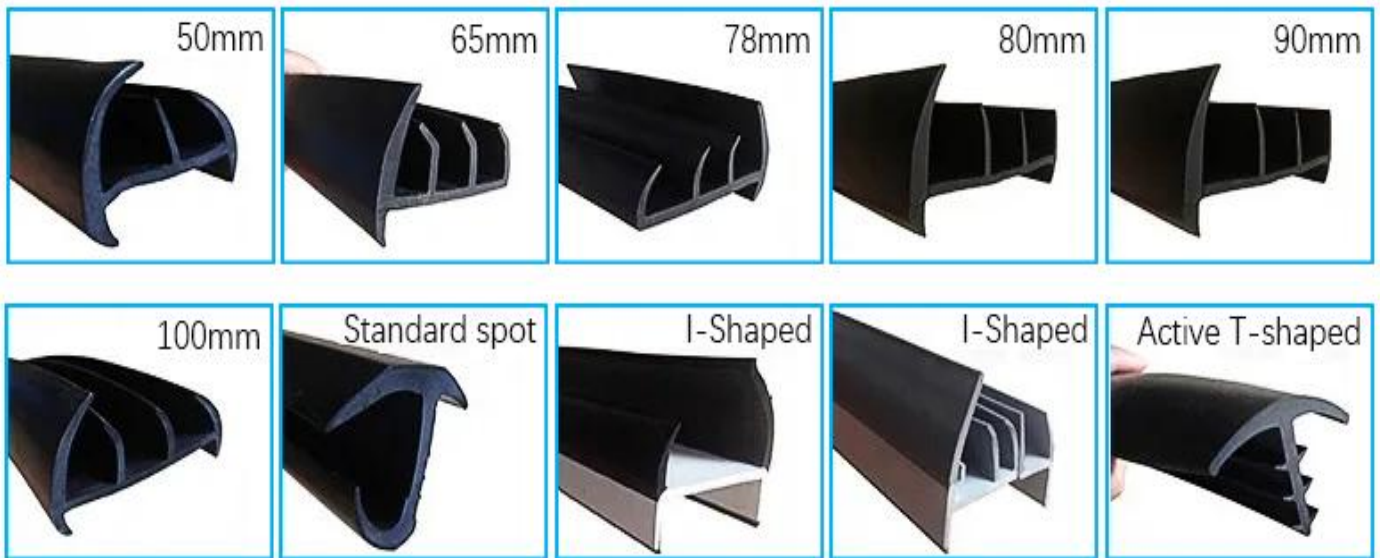
## PVC Center Bulb waterstop

Embedded in the concrete joints, acts as a continuous watertight diaphragm to prevent any seepage of liquids in constructions joints which are subject to hydrostatic pressure. It is designed for expansion or contraction joint; meanwhile, it can accommodate lateral and transverse movements which make it capable to suit the moving joints. The waterstop is extruded from an elastomeric plastic material including high grade polyvinyl chloride, special resin and some chemical additives such as plasticizers and stabilizers.





# Container Sealing Strip



## Container door seal, door gasket

TESTITEMS	STANDARD	TEST RESULTS
TENSILE STRENGTH MPA	$\geq 10$	12.8
ELONGATION AT BREAK %	$\geq 300$	430
HARDNESS SHA	$70 \pm 5$	68
TEAR STRENGTH KN/M	$\geq 40$	43
COMPRESSION SET (COMPRESSION AT 25% AFTER 100°C x 22H)%	$\leq 18$	13.5
OZONE RESISTANCE	NOCRACK	NOCRACK
BRITTLE TEST	$\leq -50$	GOOD
MATERIAL	EPDM	EPDM

## Corner forming



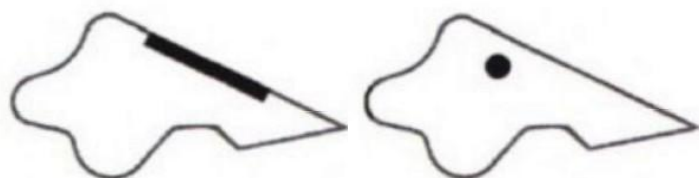
## Anti-aging and not easy to deform



**WILLMORE**  
NEW MATERIAL  
- A SPECIALIZED MANUFACTURER -

# High performance (PVC-UH) pipe seal ring

**High performance hard polyvinyl chloride (PVC-UH) pipe seals** are made of high quality rubber with built-in steel rings for sealing PVC-UH pipe joints for DN110 to DN1200 pipes. We also offer PVC-UH pipe seals in custom designs and sizes.



Section of steel frame seal ring



## Technical Parameters

1	Hardness	53° ~ 63° Shore A
2	Tensile Strength	≥ 9 MPa
3	Elongation at Break	≥ 400
4	Compression Set 23°C *72h	≤ 12
5	Hot Air Aging Tensile Strength Change 70°C *72h	
	Hardness Enhancement	-5° ~ 8° Shore A
	Tensile Enhancement	-20 ~ 0
	Elongation at Break Enhancement	-30 ~ 10
6	Volume change in water , 70°C *7 Days	-1 ~ 8
7	Ozone resistant 50pphm, 40°C *72 h	No cracks



**WILLMORE**  
NEW MATERIAL  
- A SPECIALIZED MANUFACTURER -



# Fiberglass steel rubber seal ring

**Fiberglass steel rubber seal ring:** It is made of EPDM extrusion and molded joint. It has the advantages of good elasticity, high strength, good elongation, corrosion resistance, aging resistance and long life. The cross section of the product is multi lip shape, high compression rate, fast installation, and sleeve bonding, hard to fall off.



Technical Parameters		
1	Hardness	60° ±5° Shore A
2	Tensile Strength	≥ 9 MPa
3	Elongation at Break	≥ 300%
4	Compression Set 23°C *72h	≤ 12%
5	Compression Set 70°C *24h	≤ 20%
6	Compression Set- 10°C *72h	≤ 50%
7	Hot Air Aging Tensile Strength Change 70°C *72h	
	Hardness Enhancement	-5° ~ 8° Shore A
	Tensile Enhancement	-20 ~ 0
	Elongation at Break Enhancement	-30 ~ 10
8	Volume change in water , 70°C *7 Days	-1 ~ 8
9	Ozone resistant 50pphm, 40°C *72 h	No cracks

Section type	Size W (mm)
	200
	250
	300
Inside section type	Size W (mm)
	98
	124
	148



**WILLMORE**  
NEW MATERIAL  
- A SPECIALIZED MANUFACTURER -

# Shield opening curtain rubber sheet

**Shield opening curtain fabric rubber plate**, also known as shield door curtain fabric plate, shield curtain fabric rubber plate, curtain fabric sealing ring, curtain fabric rubber plate, curtain fabric gasket, rubber curtain fabric plate, etc., is used for shield tunneling machine into the mouth of the sealing device, made of natural rubber or neoprene rubber, built-in reinforced curtain fabric, to ensure that it is not easy to break. Using the high elastic characteristics of rubber, the cord rubber plate can be deformed under various loads, so as to prevent water leakage and seepage of the building structure, and play an effective role of sealing and shock absorption.



Technical Parameters

1	Hardness	50° ±5° Shore A
2	Tensile Strength	≥ 10 Mpa
3	Elongation at Break	≥ 380 %
4	Compression Set 70°C *24h	≤ 20 %

Shield opening curtain rubber sheet Size

No.	Specification	Inside diameter (mm)	Outside diameter (mm)	Thicknes (mm)
1	Ø500	500	1100	15
2	Ø600	600	1200	15
3	Ø800	800	1460	20
4	Ø1000	1020	1720	20
5	Ø1200	1220	1920	20
6	Ø1350	1420	2120	20
7	Ø1400	1480	2180	20
8	Ø1500	1600	2300	20
9	Ø1600	1720	2420	20
10	Ø1650	1800	2500	20
11	Ø1800	2000	2700	20
12	Ø2000	2200	2900	20
13	Ø2200	2440	3140	20
14	Ø2400	2680	3380	20
15	Ø2600	2920	3620	20
16	Ø2800	3160	3860	20
17	Ø3000	3400	4100	20
18	Ø3500	4000	4800	20



**WILLMORE**  
NEW MATERIAL  
- A SPECIALIZED MANUFACTURER -



# Rectangular Cord Rubber Sheet

**Rectangular cord rubber plate** is a sealing device used at the entrance of the tunnel. It is made of natural rubber or neoprene rubber with built-in reinforced cord fabric to ensure that it is not easy to break. The rectangular curtain cloth rubber plate can be deformed under various loads by using the high elastic characteristics of rubber, so as to prevent water leakage and seepage of building structure, and play an effective role of sealing and shock absorption.



Technical Parameters of rubber sheet

1	Hardness	50° ±5° Shore A
2	Tensile Strength	≥ 10 Mpa
3	Elongation at Break	≥ 380%
4	Compression Set 23°C *72h	≤ 20%



Rectangular cord rubber sheet



No.	Section width W (mm)	Corner radius R1 (mm)	Corner radius R2 (mm)
1	596	193	600
2	596	179	775
3	458	400	600
4	400	330	730
5	550	330	880



\* Other sizes can be customized



**WILLMORE**  
NEW MATERIAL  
- A SPECIALIZED MANUFACTURER -



# WILLMORE RUBBER SERIES

*Rubber related product manufacturers and service providers*